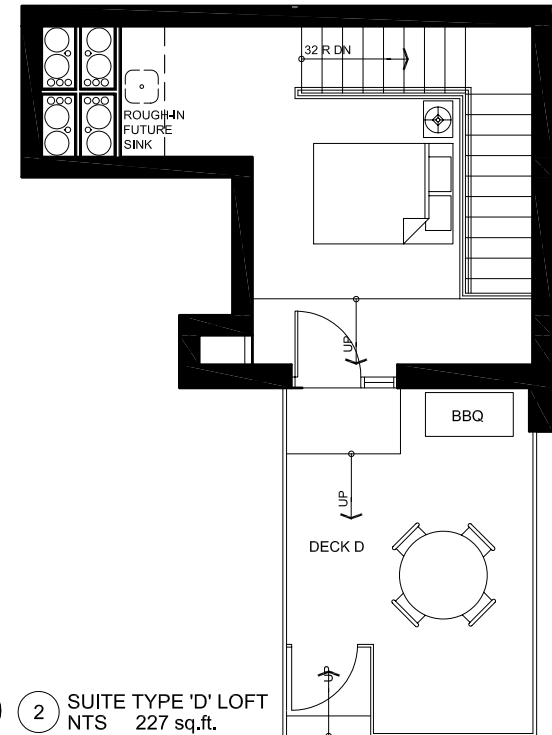


① SUITE TYPE 'D' FIFTH FLOOR  
NTS 1509 sq.ft. + 227 sq.ft.

8' HIGH PARTITION  
FULL HEIGHT PARTITION



② SUITE TYPE 'D' LOFT  
NTS 227 sq.ft.



# Rumley Distinctive Lofts

The Developer reserves the right to make reasonable alterations to the plans and reasonable substitutions to the specifications included therein, provided that such alterations and substitutions comply with the National Building Code of Canada. All dimensions are approximate and will be confirmed by legal land survey.



**KlypakRusick Architects**

714 DUCHESNE STREET SASKATOON SK S7N 0R3  
 (306) 244-9668 / (416) 244-3252 / info@klypakrusick.com

DATE PLOTTED: 22 November 2007 DATE: November 07